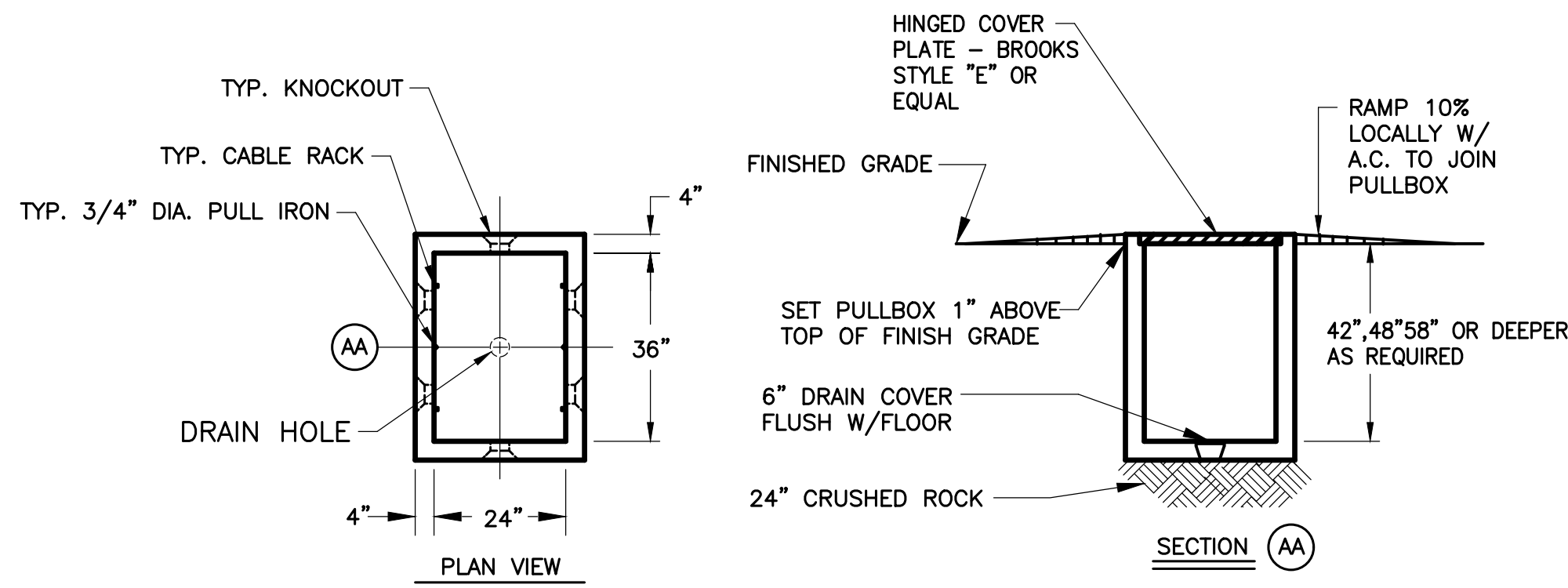
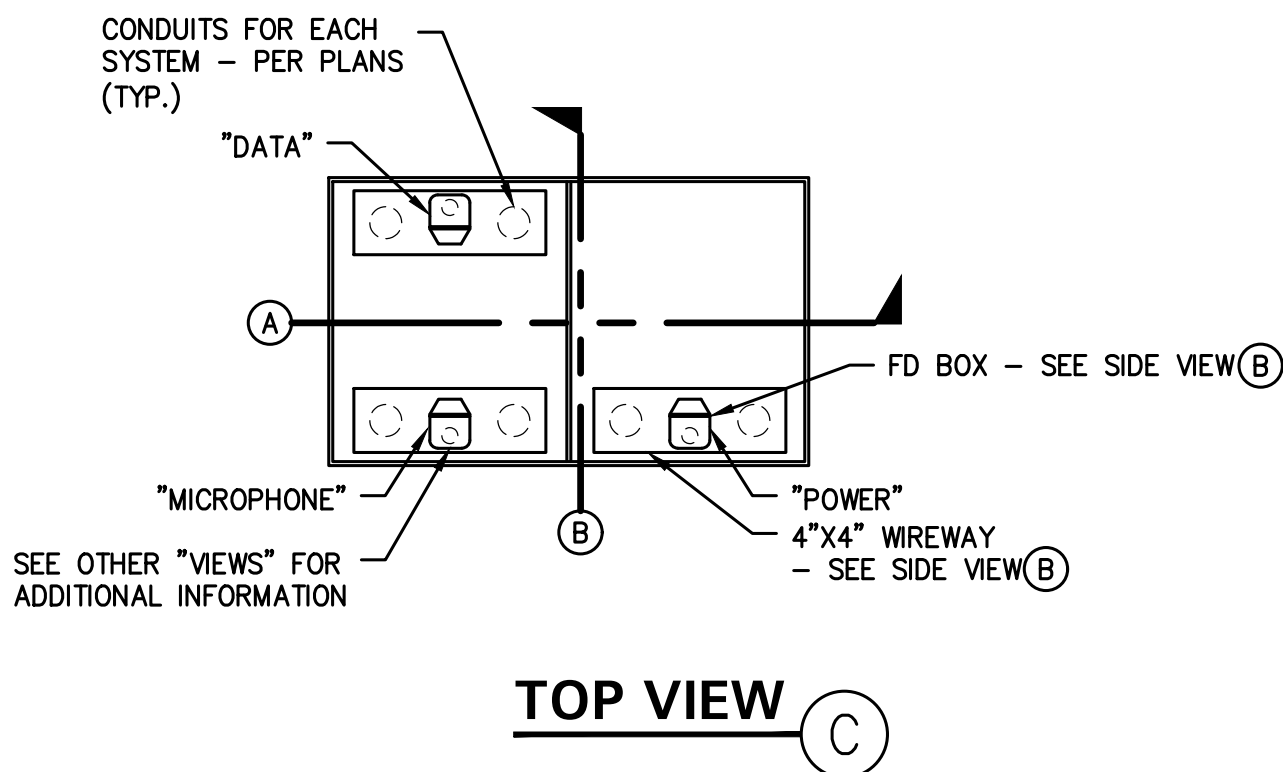
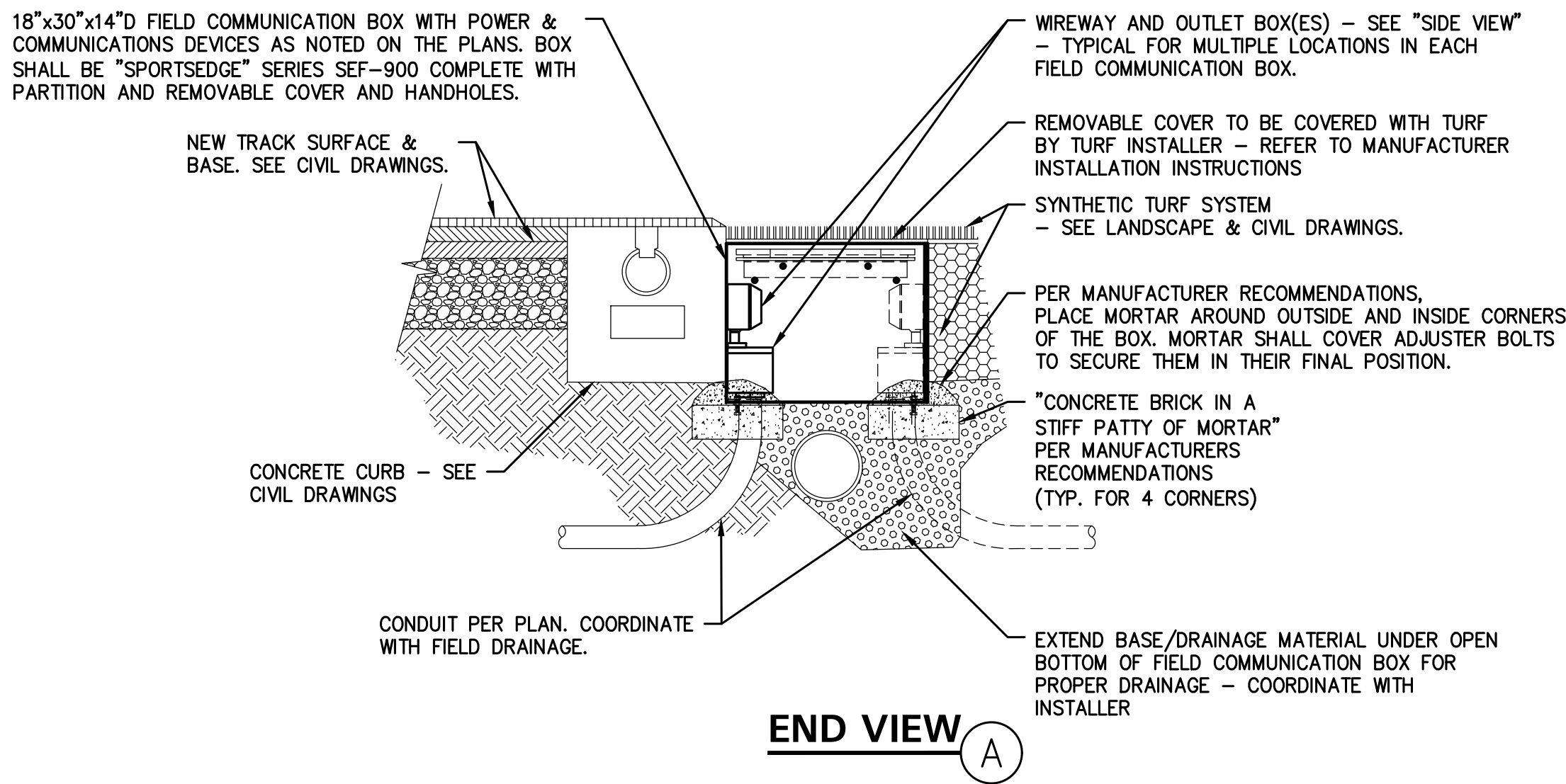


CUSTOM PRESSBOX MICROPHONE PATCH PANEL A
NO SCALE E3.02



- NOTES:
1. PRECAST CONCRETE PULLBOX SHALL BE BROOKS 100FPB(2'x3') SERIES AND 400DPB (3'x5') SERIES OR EQUAL BY QUICKSET. PULLBOX SHALL BE COMPLETE WITH STAINLESS STEEL FLATHEAD SCREWS AND SELF CLEANING HOLES. PROVIDE CABLE RACKS ON WALLS INDICATED. EACH RACK SHALL BE EQUIPPED WITH THREE (3) PORCELAIN CABLE HOLDERS ON VERTICAL STEEL MOUNTING BAR. STEEL COVER PLATES SHALL BE "ALGRID" AS MANUFACTURED BY "SAFE-WALK INC." AND SHALL CONFORM TO ASTM-A36 AND BE GALVANIZED. COVER SHALL BE RATED FOR HEAVY VEHICULAR TRAFFIC.

UNDERGROUND PULLBOX DETAIL C
NO SCALE E3.02

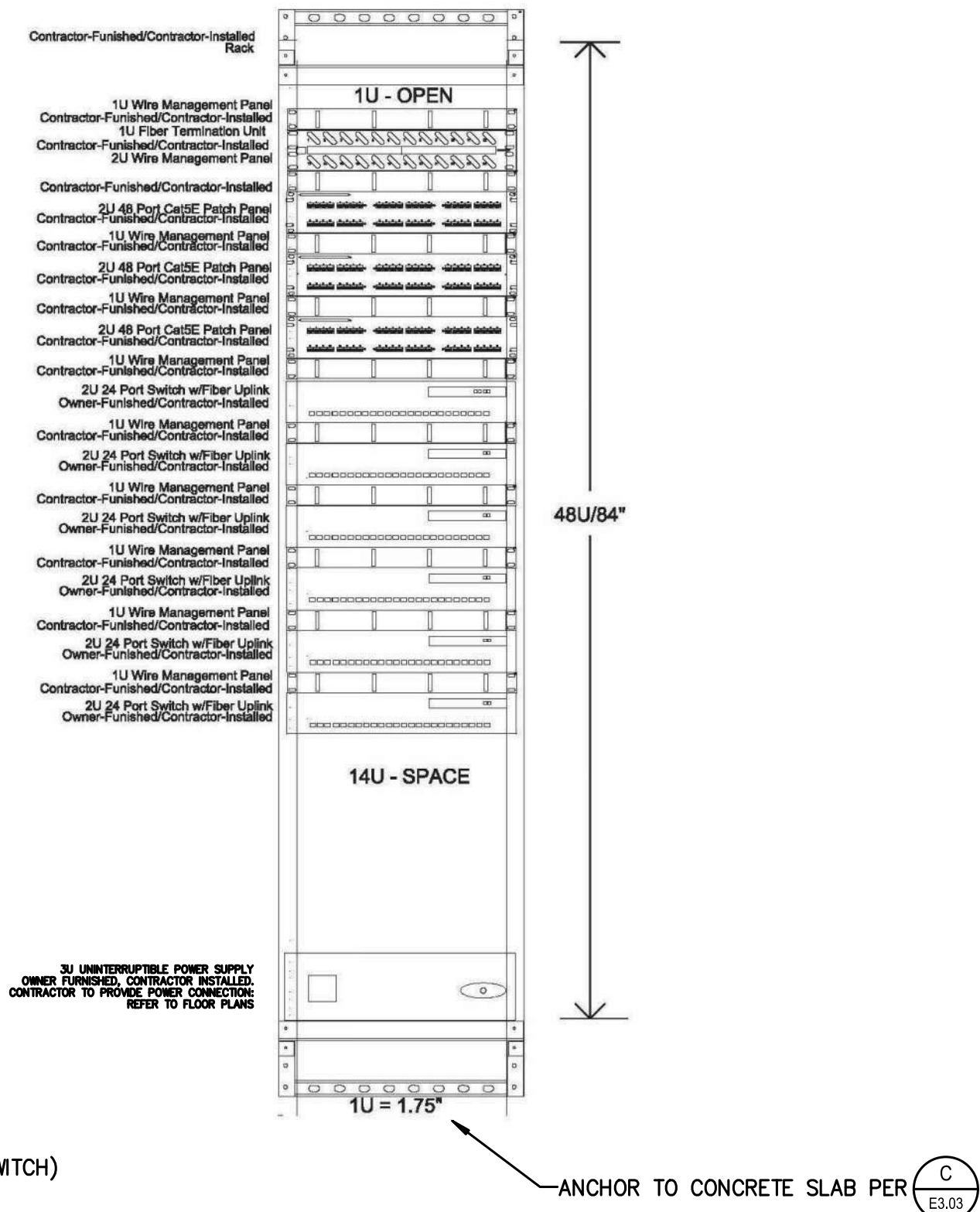


IN-GRADE FIELD COMMUNICATION BOX DETAILS B
NO SCALE E3.02

VERTICAL CABLE MANAGEMENT AS REQUIRED
- CONTRACTOR FURNISHED, CONTRACTOR INSTALLED

BOND THE RACK TO THE GROUND BAR WITH
3/4\"/>

PATCH CORDS FOR ALL ACTIVE PORTS REQUIRED,
CONTRACTOR FURNISHED & INSTALLED



MAXIMUM 120 CAT 6 DROPS PER 84\"/>

TYPICAL 84\"/>

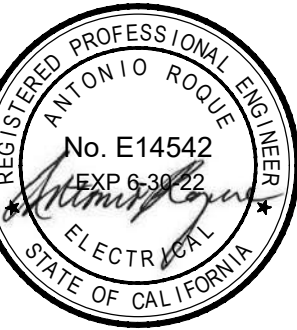
NOTE: CONTRACTOR TO CUSTOMIZE THIS DETAIL FOR REQUIRED EQUIPMENT FOR EACH RACK AND INCLUDE IN SUBMITTAL FOR REVIEW.

THIS APPROVAL IS FOR ITEMS WITHIN CLOUDED AREAS ONLY. FOR OTHER INFORMATION NOT CONTAINED WITHIN CLOUDED AREAS, REFER TO ORIGINAL DSA APPROVED PLANS.

DO NOT USE THESE PLANS AS SUBSTITUTE FOR THE ORIGINAL DSA APPROVED PLANS

REVISIONS

1 ADDENDUM 1 02/01/2022



1909B.MOD
TURPIN & RATTAN
ENGINEERING, INC.
CONSULTING ENGINEERS
10000 ROCKY HILL DRIVE, SUITE 200
MONTROSE, CA 91328-1855
818 / 249 / 0444 FAX 818 / 249 / 1487

NORWALK LA MIRADA UNIFIED SCHOOL DISTRICT
LA MIRADA HIGH SCHOOL NEW FOOTBALL
STADIUM PROJECT
13520 ADELEA DRIVE, LA MIRADA, CA 90638

DSA # 03-120551

NAC
ARCHITECTURE

NAC NO. 161-19015
DATE 02/01/2022

ADDENDUM 1

ELECTRICAL
DETAILS

E3.02